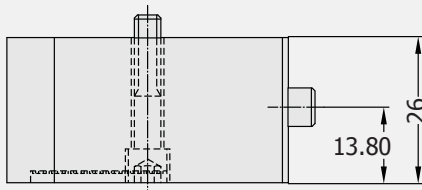
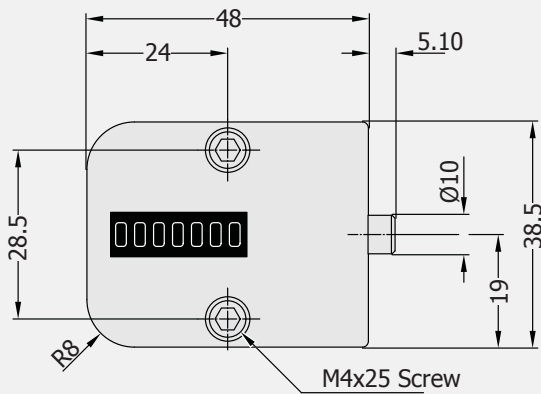
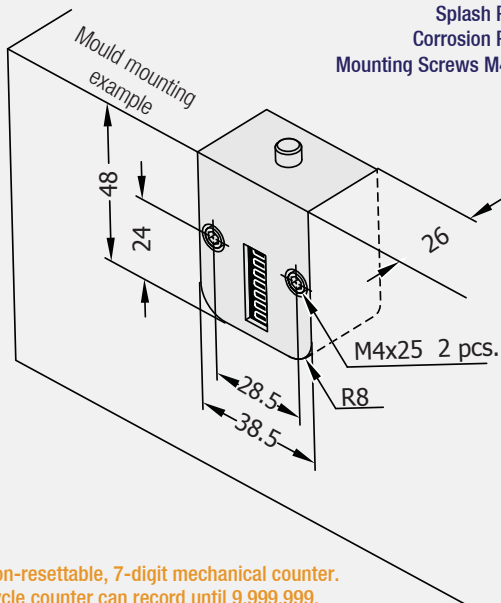


Cycle Counter
(economic type)

Code: **G124**



Max. Operation Temperature 120°C
 Splash Proof
 Corrosion Proof
 Mounting Screws M4x25



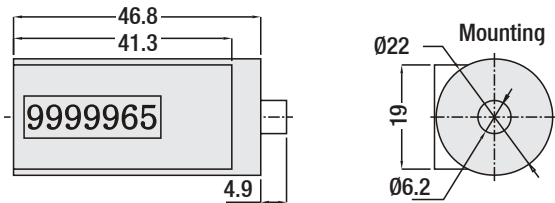
* Non-resettable, 7-digit mechanical counter.
 * Cycle counter can record until 9.999.999.

Order: **G124**

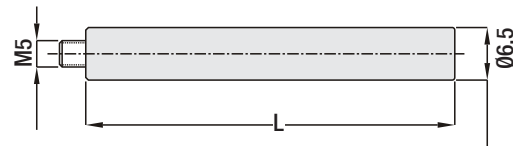


Cycle Counter - Round Type
(economic type)

Code: **G142**



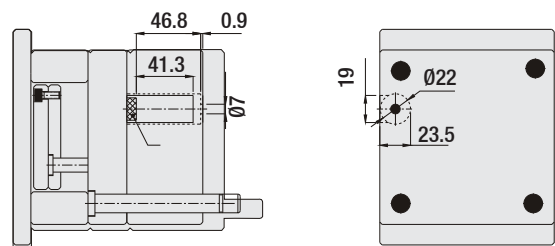
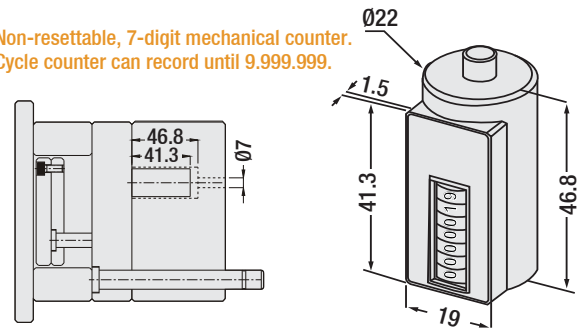
Actuator Extension Rod (processable in desired dimension)



Round Cycle Counter: Production counter / unite has round (cylindrical) structure and can be mounted inside of support plate according to the following drawings (if your mould support / holder is in suitable position). In case your support / holder is high / long, additional operation can be provided with extension rod.

Processing Advantage: During mounting of round cycle counter to mould, only mounting slot is opened with drill (22,5 mm), (42 x 17) housing is generated. According to the standard model, it is provided mounting practicability at application. Maximum operation temperature is 120°C.

* Non-resettable, 7-digit mechanical counter.
 * Cycle counter can record until 9.999.999.



Order: **G142**